



Third Quarter 2018 Results

Earnings Presentation

Cautionary Statement

- This presentation contains forward looking information
- Forward looking information is based on management assumptions and analysis
- Actual experience may differ, and those differences may be material
- Forward looking information is subject to significant uncertainties and risks as they relate to events and/or circumstances in the future
- This presentation must be read in conjunction with the press release for the second quarter and first half 2018 results and the disclosures therein
- Petroleum Geo-Services ASA and its subsidiaries (“PGS” or “the Company”) has implemented the new revenue recognition standard, IFRS 15, as the Company’s external financial reporting method. This change impacts the timing of revenue recognition for MultiClient pre-funding revenues and related amortization. PGS will for internal management purposes continue to use the revenue recognition principles applied in previous periods, which are based on percentage of completion, and use this for numbers disclosed as Segment Reporting. See Note 14 of the Q3 2018 earnings release for definitions of terms. See Note 16 of the Q3 2018 earnings release for a description of the change in revenue recognition resulting from the implementation of IFRS 15. PGS will not restate prior periods

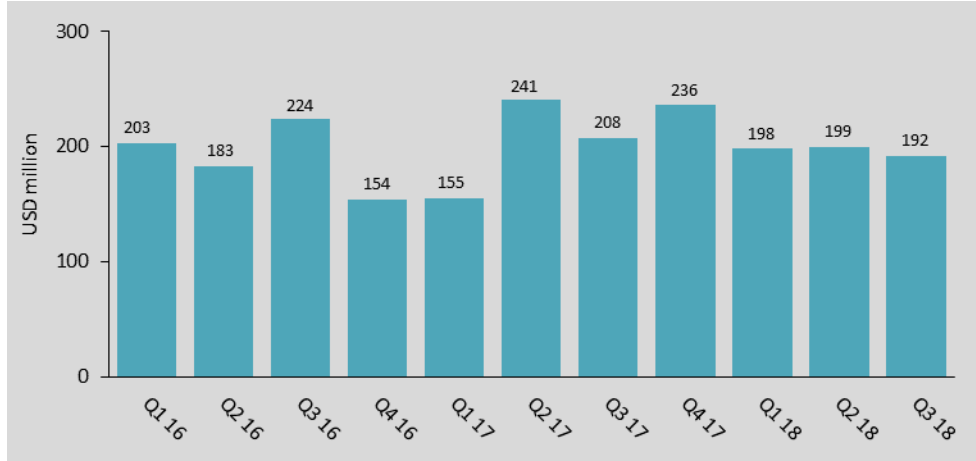
Q3 Highlights: Investing in MultiClient Growth



- Segment Revenues of USD 192.1 million
 - EBITDA of USD 132.8 million
- Expanding the MultiClient library:
 - MultiClient cash investment of USD 101.9 million
 - Will harvest from these investments in a strengthening market
- Leads for Q4 MultiClient late sales better than for many years
- Fundamentals improving:
 - Strong oil price
 - Improved cash flow amongst clients
 - Highest value of bids and leads in more than 3.5 years
 - 28% year-to-date increase of Segment MultiClient revenues

Financial Summary

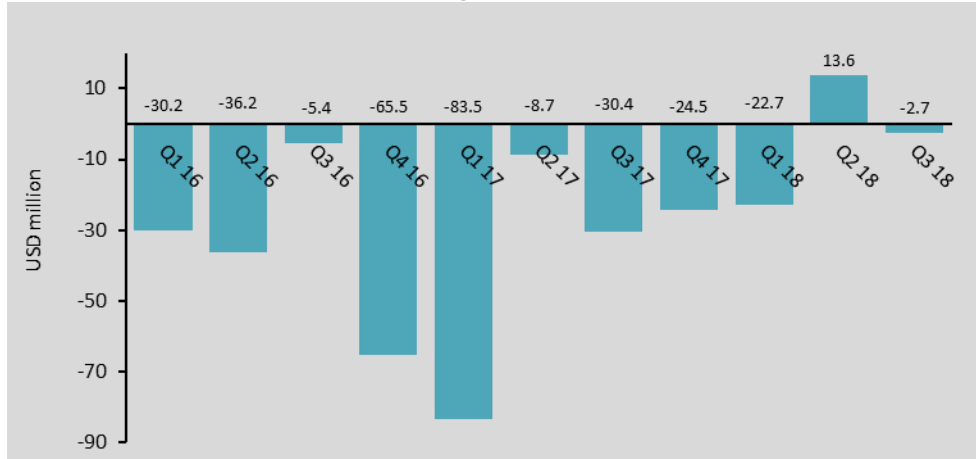
Segment Revenues



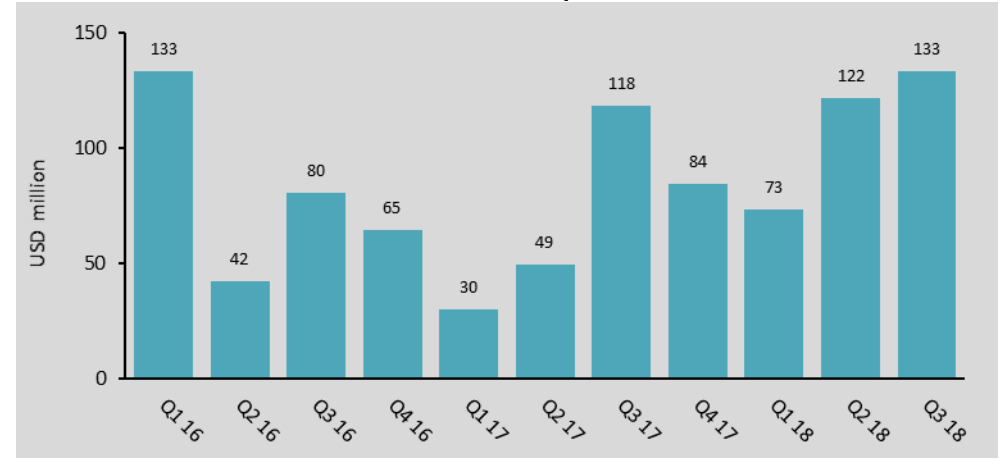
Segment EBITDA*



Segment EBIT**



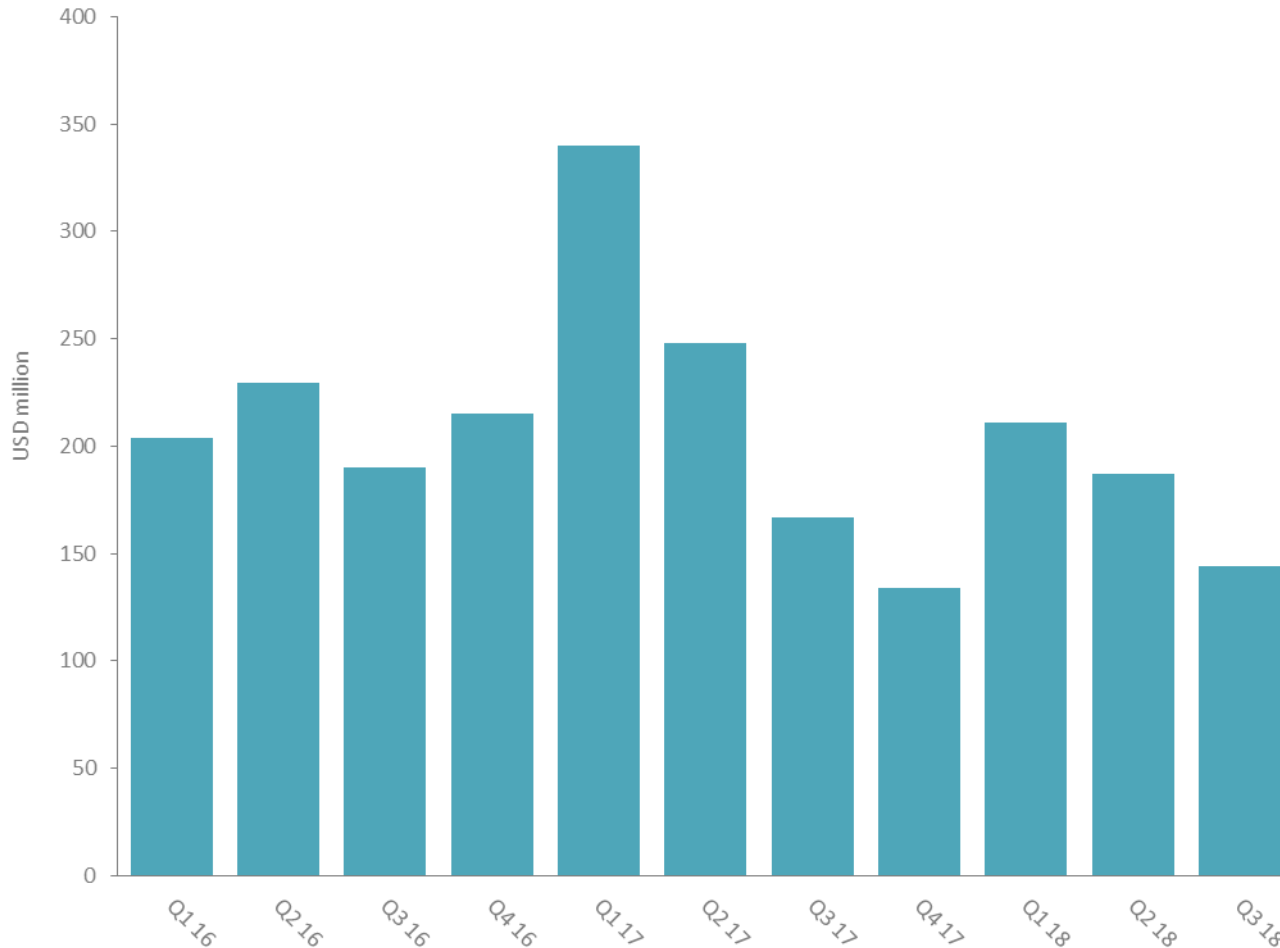
Cash Flow from Operations



*EBITDA, when used by the Company, means EBIT excluding Other charges, impairment and loss/gain on sale of long-term assets and depreciation and amortization as defined in Note 14 of the Q3 2018 earnings release.

**Excluding impairments and Other charges.

Order Book



- Order book of USD 144 million by end Q3 2018
- 3D vessel booking for next three quarters of 34 vessel months*
 - Q4 18: 15 vessel months
 - Q1 19: 14 vessel months
 - Q2 19: 5 vessel months
- Large opportunity pipeline
- We have experienced delays in formalizing Q4 18 projects
 - Slowness expected to be temporary
 - Will operate six vessels in Q4
 - Will incur idle time in Q4, due to late commencement of some projects

*As of October 16, 2018.




Refocused
Reenergized

Financials

Unaudited Third Quarter 2018 Results

Consolidated Key Financial Figures

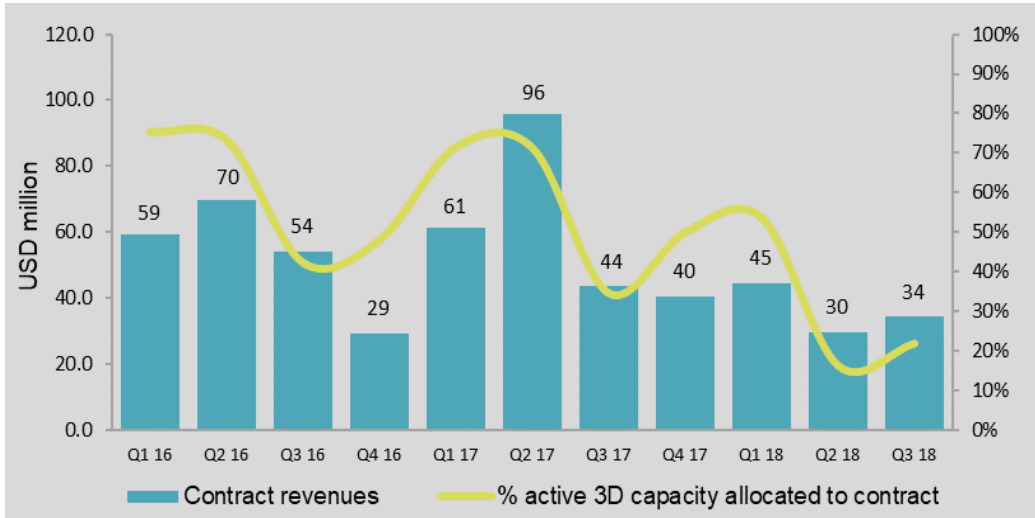
	Q3	Q3	Nine months	Nine months	Full year
USD million (except per share data)	2018	2017	2018	2017	2017
Profit and loss numbers Segment Reporting*					
Segment revenues	192.1	207.6	589.3	602.9	838.8
Segment EBITDA	132.8	108.6	361.2	251.3	374.1
Segment EBIT ex. Impairment and other charges, net	(2.7)	(30.4)	(11.8)	(122.6)	(147.1)
Profit and loss numbers As Reported under IFRS 15					
Revenues	163.4	207.6	604.5	602.9	838.8
EBIT	(10.4)	(113.3)	12.9	(224.4)	(383.6)
Net financial items	(18.2)	(22.8)	(56.2)	(52.2)	(84.5)
Income (loss) before income tax expense	(28.7)	(136.1)	(43.3)	(276.6)	(468.2)
Income tax expense	(6.8)	(53.7)	(21.2)	(51.9)	(55.2)
Net income (loss) to equity holders	(35.4)	(189.9)	(64.5)	(328.6)	(523.4)
Basic earnings per share (\$ per share)	(\$0.10)	(\$0.56)	(\$0.19)	(\$0.97)	(\$1.55)
Other key numbers					
Net cash provided by operating activities	133.3	118.4	328.6	197.8	281.8
Cash Investment in MultiClient library	(101.9)	(82.0)	(236.9)	(159.4)	(213.4)
Capital expenditures (whether paid or not)	(14.1)	(16.6)	(26.4)	(131.1)	(154.5)
Total assets	2,397.0	2,644.3	2,397.0	2,644.3	2,482.8
Cash and cash equivalents	44.4	24.2	44.4	24.2	47.3
Net interest bearing debt	1,149.0	1,113.2	1,149.0	1,113.2	1,139.4

* For definition of Segment Reporting numbers see Note 14 of the unaudited third quarter 2018 results, released on October 18, 2018.

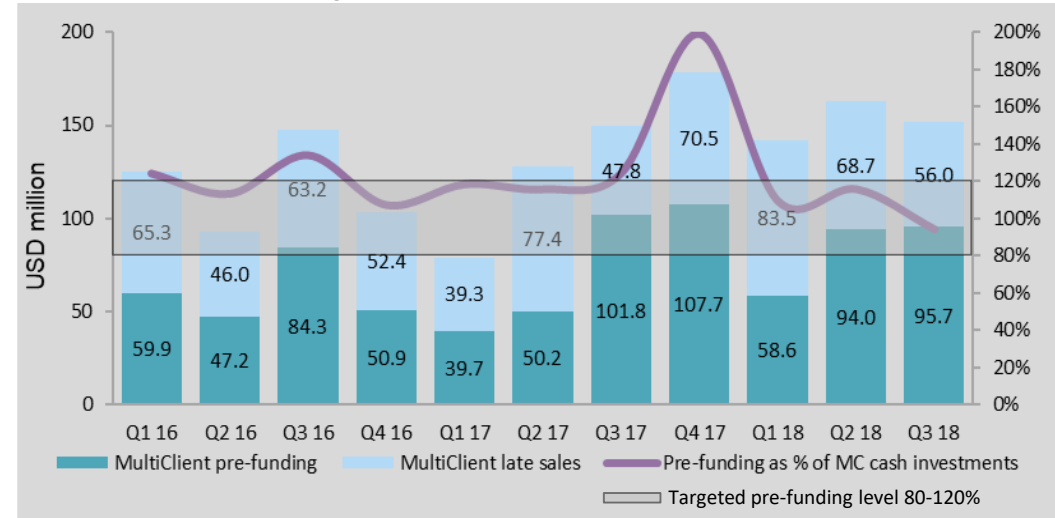
The accompanying unaudited financial information has been prepared under IFRS. This information should be read in conjunction with the unaudited third quarter 2018 results, released on October 18, 2018.

Q3 2018 Operational Highlights

Contract revenues

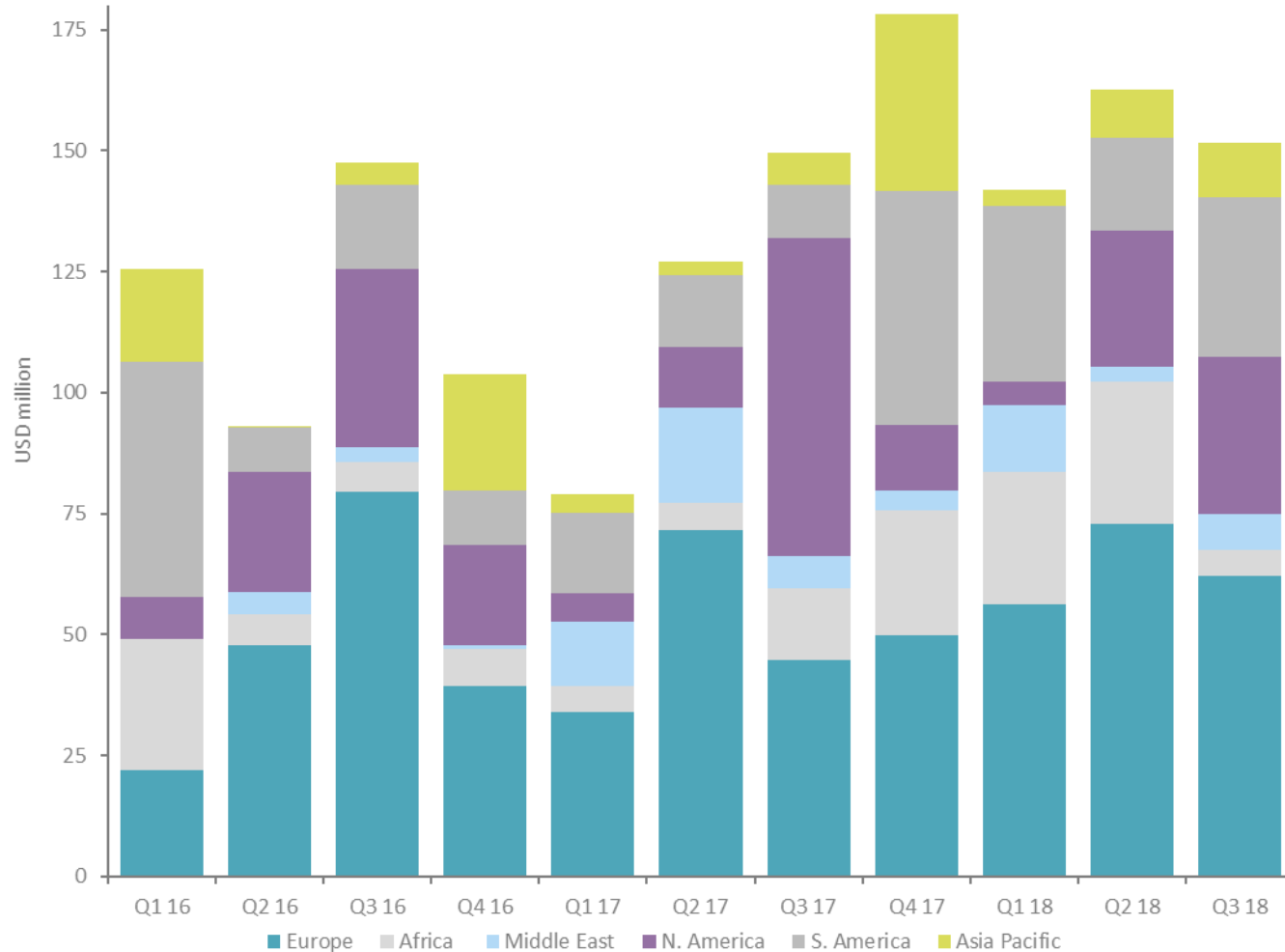


Segment MultiClient revenues



- Total Segment MultiClient revenues of USD 151.7 million
 - Pre-funding revenues of USD 95.7 million
 - Pre-funding level of 94% on USD 101.9 million of MultiClient cash investment
 - Late sales revenues of USD 56.0 million
- Contract revenues of USD 34.3 million
 - Low capacity allocation to contract

Pre-funding and Late Sales Revenues Combined: Segment MultiClient Revenues per Region



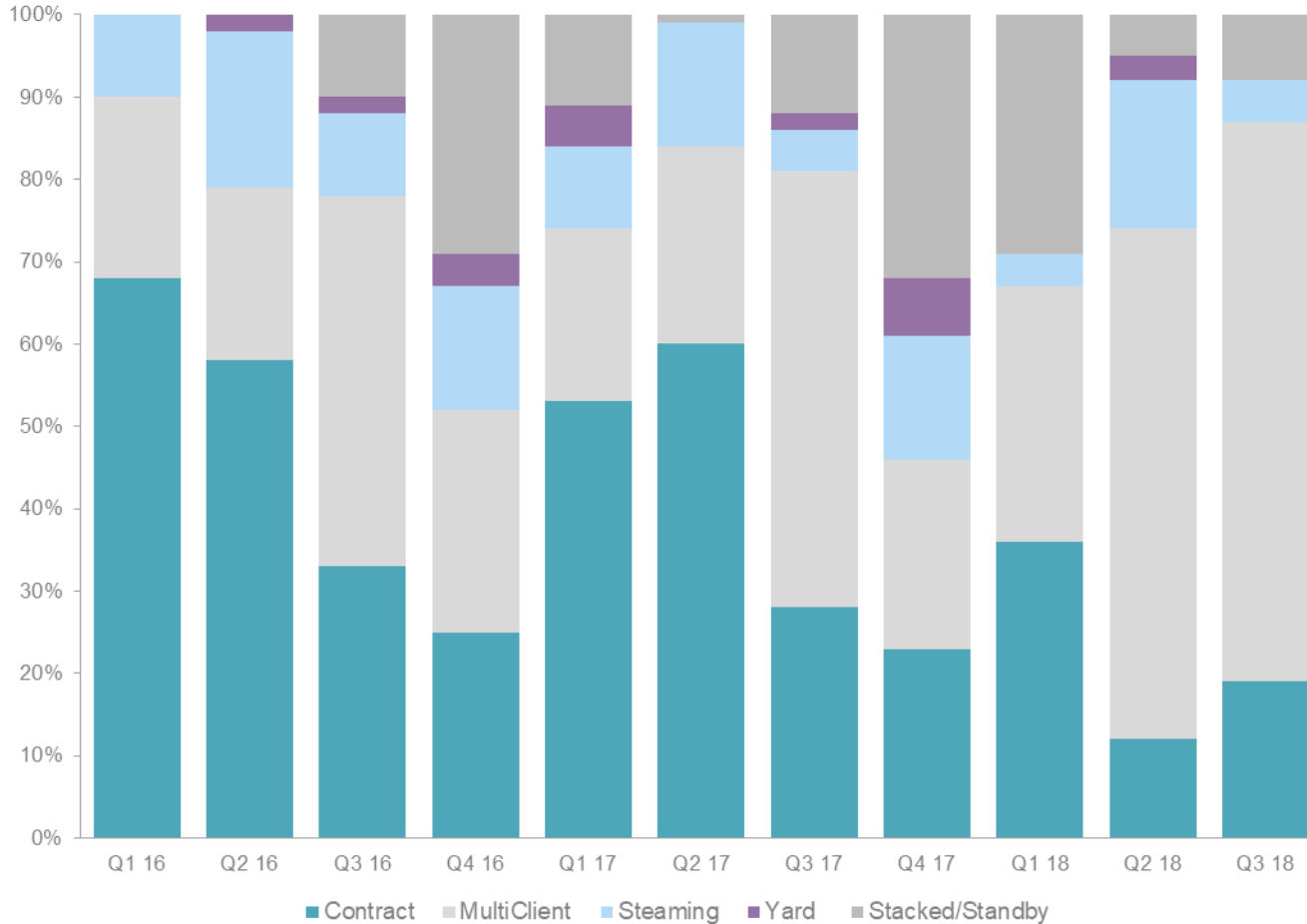
- Q3 2018 pre-funding revenues driven by North America, Europe and South America
- Late sales revenues dominated by Europe

Key Operational Segment Reporting Numbers

USD million	2018			2017			
	Q3	Q2	Q1	Q4	Q3	Q2	Q1
Contract revenues	34.3	29.7	44.5	40.5	43.5	95.9	61.4
MultiClient Pre-funding	95.7	94.0	58.6	107.7	101.8	50.2	39.7
MultiClient Late sales	56.0	68.7	83.5	70.5	47.8	77.4	39.3
Imaging	6.1	6.7	6.7	9.8	12.5	14.9	13.8
Other	0.0	0.3	4.6	7.4	2.0	2.1	0.6
Total Revenues	192.1	199.4	197.8	235.9	207.6	240.5	154.8
Operating cost	(59.3)	(63.4)	(105.5)	(113.1)	(99.0)	(127.9)	(124.7)
EBITDA*	132.8	136.0	92.3	122.8	108.6	112.5	30.1
MultiClient amortization	(112.3)	(104.6)	(76.3)	(121.6)	(153.6)	(80.5)	(70.6)
Depreciation and amortization of long-term assets (excl. MC library)	(23.3)	(17.8)	(38.7)	(39.9)	(27.1)	(42.9)	(44.5)
Impairment and loss on sale of long-term assets (excl. MC library)	0.0	0.0	0.0	(55.8)	(28.5)	(9.9)	0.0
EBIT	(2.7)	13.6	(22.7)	(94.5)	(100.6)	(20.8)	(85.0)
CAPEX, whether paid or not	(14.1)	(8.3)	(4.0)	(23.4)	(16.6)	(12.9)	(101.6)
Cash investment in MultiClient	(101.9)	(81.3)	(53.7)	(54.0)	(82.0)	(43.8)	(33.6)
Order book	144	187	211	135	167	248	340

* EBITDA, when used by the Company, means EBIT excluding Other charges, impairment and loss/gain on sale of long-term assets and depreciation and amortization as defined in Note 14 of the Q3 2018 earnings release. This information should be read in conjunction with the unaudited third quarter 2018 results released on October 18, 2018.

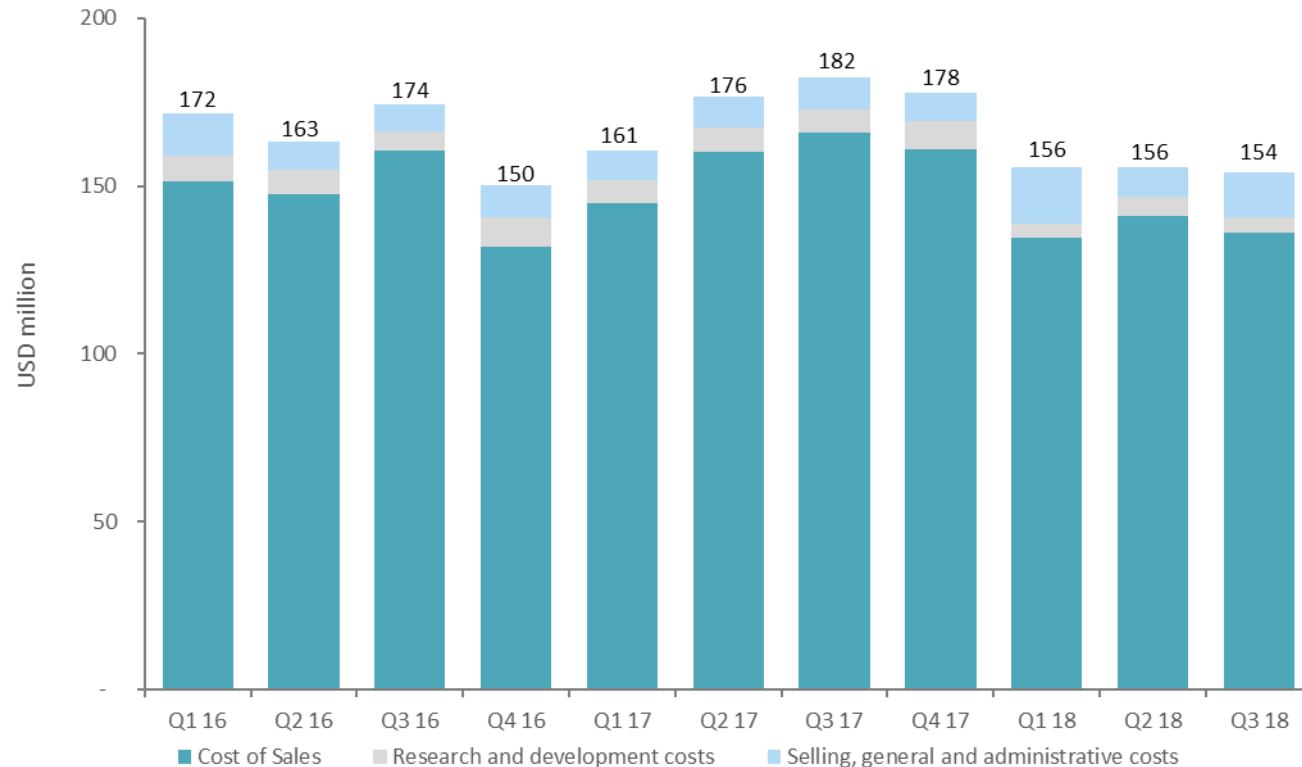
Seismic Streamer 3D Fleet Activity in Streamer Months: Vessel Utilization*



- 87% active vessel time in Q3 2018
- Will incur some idle time in Q4
- Approximately 60% of active 3D vessel time planned for contract work in Q4

* The vessel allocation excludes cold-stacked vessels.

Group Cost* Focus Delivers Results



- Graph shows gross cash costs excluding the effect of steaming deferral
 - A better measure of actual quarterly cost
- Q3 18 gross cash cost 15% lower than in Q3 17
- Q4 18 gross cash costs expected to be lower due to less vessel capacity in operation
- Full year gross cost estimate based on six vessels in Q4

Full year 2018 gross cash costs expected to be approximately USD 600 million

Consolidated Statements of Cash Flows Summary

	Q3	Q3	Nine Months	Nine Months	Full year
USD million	2018	2017	2018	2017	2017
Cash provided by operating activities	133.3	118.4	328.6	197.8	281.8
Investment in MultiClient library	(101.9)	(82.0)	(236.9)	(159.4)	(213.4)
Capital expenditures	(14.9)	(9.3)	(35.9)	(134.0)	(148.8)
Other investing activities	(5.5)	(8.7)	(20.0)	9.1	62.1
Net cash flow before financing activities	11.0	18.4	35.8	(86.5)	(18.3)
Financing activities	9.0	(47.6)	(38.7)	48.9	3.8
Net increase (decr.) in cash and cash equiv.	20.1	(29.1)	(2.9)	(37.5)	(14.4)
Cash and cash equiv. at beginning of period	24.4	53.3	47.3	61.7	61.7
Cash and cash equiv. at end of period	44.4	24.2	44.4	24.2	47.3

- Cash flow from operating activities of USD 133.3 million in Q3 2018
 - Improvement from Q3 2017 driven by higher earnings as a result of more MultiClient activity
 - Impacted by USD 6.4 million payment of severance and other restructuring provisions made in Q4 2017 (USD 33.2 million year-to-date)
- Planning for positive cash flow after debt service in 2018¹

¹The financial target of being cash flow positive after debt service excludes payments relating to severance and other restructuring provisions made in Q4 2017 as well as drawings/repayments on the RCF.

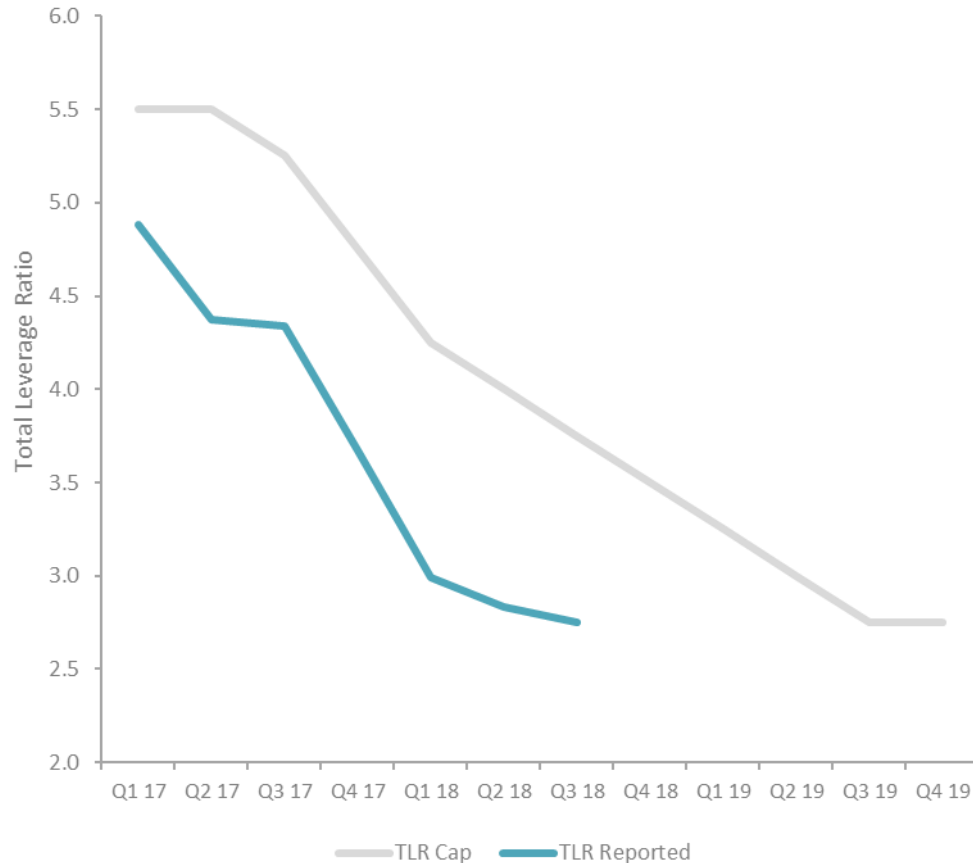
Balance Sheet Key Numbers

	September 30	September 30	Opening balance	December 31
USD million	2018	2017	01.01.2018	2017
Total assets	2,397.2	2,644.3	2,567.6	2,482.8
MultiClient Library	709.3	566.1	668.0	512.3
Shareholders' equity	749.7	1,077.1	804.2	879.5
Cash and cash equivalents (unrestricted)	44.4	24.2	47.3	47.3
Restricted cash	42.4	114.7	43.3	43.3
Liquidity reserve	159.5	224.2	257.3	257.3
Gross interest bearing debt	1,235.9	1,252.1	1,229.5	1,229.5
Net interest bearing debt	1,149.0	1,113.5	1,139.4	1,139.4

- Liquidity reserve of USD 159.5 million
 - In September the RCF was reduced from USD 400 million to USD 350 million in accordance with the extension and amendment of the facility agreed in November 2016

- Balance sheet restated January 1, 2018 due to IFRS 15
 - Carrying value of MultiClient surveys in progress increased by USD 155.7 million
 - Accrued revenues and other receivables decreased by USD 70.9 million, and deferred revenues increased by USD 160.1 million
 - Shareholders' equity decreased by USD 75.3 million

Good Headroom to Maintenance Covenant



- Substantial reduction of Total Leverage Ratio (“TLR”) during 2017 and year-to-date 2018
 - Significant headroom to required level
- TLR of 2.75 as of September 30, 2018, compared to 4.34:1 as of September 30, 2017
- Expect to be in compliance going forward

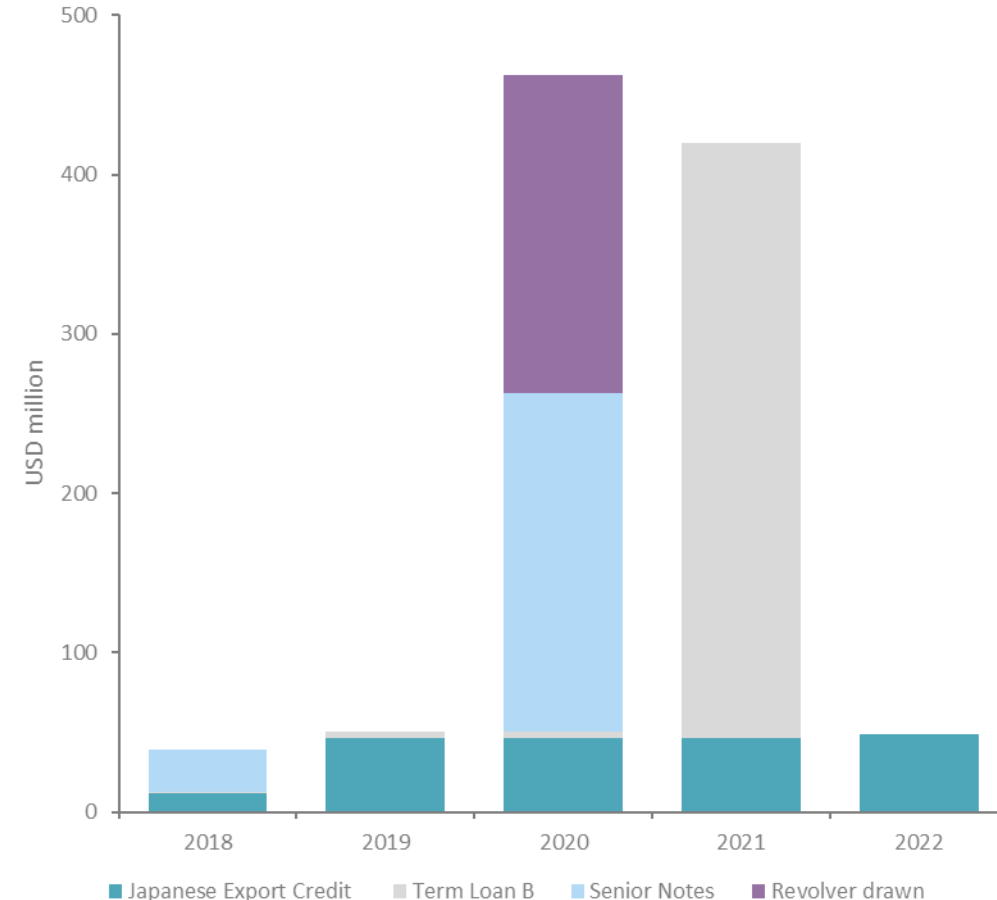
Summary of Debt and Drawing Facilities

Debt and facilities as of September 30, 2018:

Long-term Credit Lines and Interest Bearing Debt	Nominal Amount	Total Credit Line	Financial Covenants
USD 400.0m TLB, due 2021 Libor (minimum 0.75%) + 250 bps	USD 382.0m		None, but incurrence test: total leverage ratio $\leq 3.00x^*$
Revolving credit facility ("RCF"), due 2020 Libor + margin of 325-625 bps (linked to TLR) + utilization fee	USD 235.0m	USD 350.0m	Maintenance covenant: total leverage ratio 4.25x Q1-18, thereafter reduced by 0.25x each quarter to 2.75x by Q3-19
Japanese ECF, 12 year with semi-annual instalments. 50% fixed/ 50% floating interest rate	USD 380.9m		None, but incurrence test for loan 3&4: Total leverage ratio $\leq 3.00x^*$ and Interest coverage ratio $\geq 2.0x^*$
December 2020 Senior Notes, coupon of 7.375%	USD 212.0m		None, but incurrence test: Interest coverage ratio $\geq 2.0x^*$
December 2018 Senior Notes, coupon of 7.375%	USD 26.0m		None

*Carve out for drawings under ECF and RCF

Debt maturity profile:

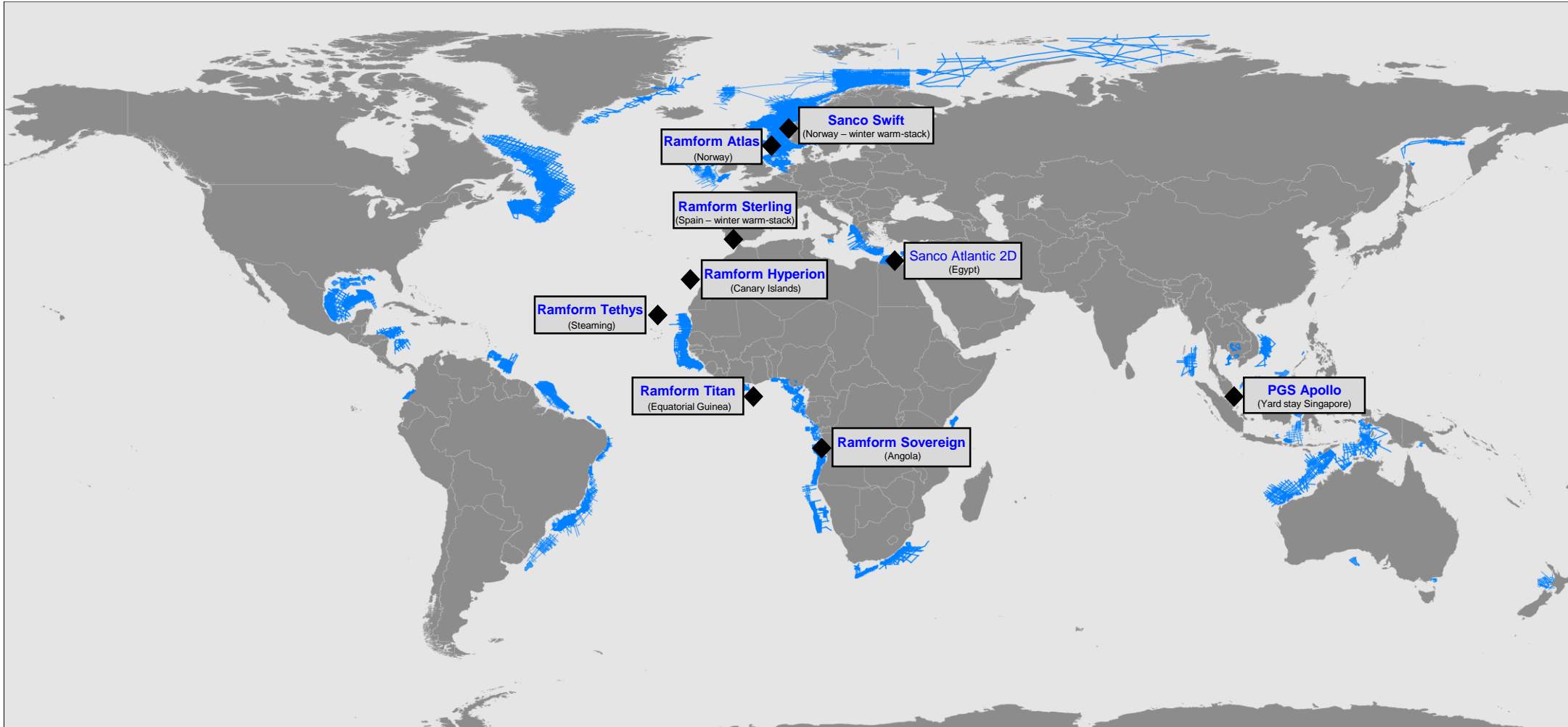




Operational Update and Market Comments

Unaudited Third Quarter 2018 Results

Streamer Operations October 2018

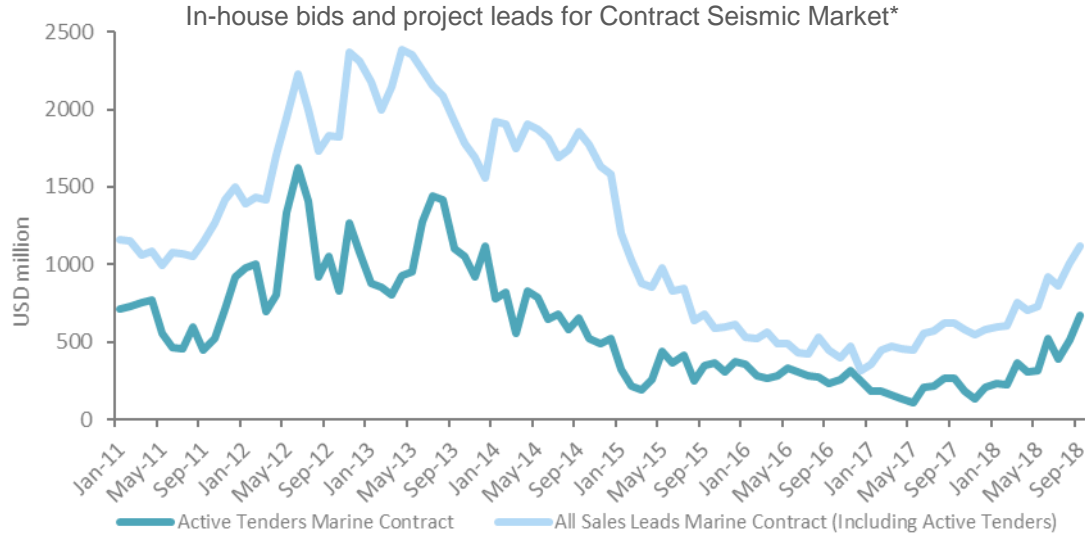


Marine Seismic Market Outlook

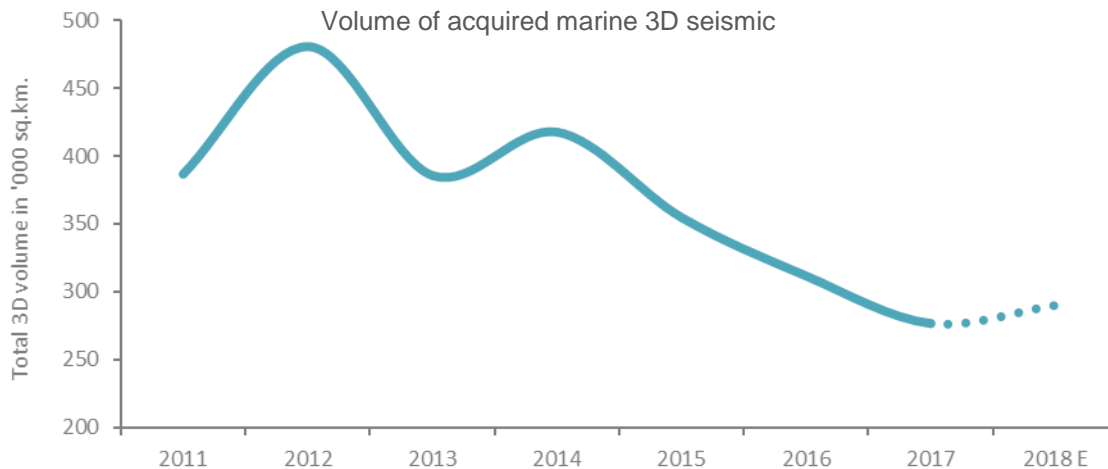


- Higher oil price, improved cash flow among oil companies and an exceptionally low oil and gas discovery rate are benefitting marine 3D seismic market fundamentals
- Value of bids and leads for contract work at highest level for more than 3.5 years
 - Clear signs of improvement for marine contract
 - Achieved higher prices and margins year-to-date, compared to same period last year
- Solid increase in MultiClient sales compared to last year
 - Leads for Q4 MultiClient late sales better than for many years

Seismic Market Activity



- Value of Sales Leads and Active Tenders continues to rise
 - Recent increase driven by West Africa and South America
 - Increasing number of bids for 2019 Europe season



- Volume of acquired marine 3D seismic is expected to be higher in 2018 vs. 2017
 - Somewhat weaker expected vessel utilization in Q4 reduces the estimated overall 2018 volume

*Internal estimates as of September 30, 2018.

2018 Guidance

- Group gross cash costs of ~USD 600 million
 - Of which ~USD 285 million to be capitalized as MultiClient cash investments

- MultiClient cash investments ~USD 285 million
 - ~65% of 2018 active 3D vessel time allocated to MultiClient

- Capital expenditure of ~USD 40 million

Q3 in Conclusion: Expanding the MultiClient Data Library



- Invested more than USD 100 million in attractive MultiClient projects and continued to expand on the MultiClient data library
- Achieved higher prices and margins for contract work year-to-date compared to same period last year
- Weak order book development during the quarter
 - PGS market view unchanged owing to improving fundamentals
- Tight overall cost control remains a priority



Thank You – Questions?

COPYRIGHT

The presentation, including all text, data, photographs, drawings and images (the "Content") belongs to Petroleum Geo-Services ASA, and/or its subsidiaries ("PGS") and may be protected by Norwegian, U.S., and international copyright, trademark, intellectual property and other laws. Accordingly, neither the whole nor any part of this document shall be reproduced in any form nor used in any manner without express prior written permission by PGS and applicable acknowledgements. In the event of authorized reproduction, no trademark, copyright or other notice shall be altered or removed. © 2015 Petroleum Geo-Services ASA. All Rights Reserved.

Appendix

Main Yard Stays* Next Six Months



Vessel	When	Expected Duration	Type of Yard Stay
<i>Ramform Atlas</i>	Q4 2018	7 days	Main class and technical yard
<i>Apollo</i>	Q4 2018	12 days	Major engine overhaul
<i>Ramform Sterling</i>	Q1 2019	22 days	Main class and technical yard

*Yard stays are subject to changes.

Appendix

RAMFORM Titan-Class

25 years

Lifespan

Setting the benchmark for this generation of seismic vessels and the next.

Ramform Facts



Stability

The Titan design ensures better performance and room for growth. The ultra-broad delta shaped hull provides fantastic seakeeping capabilities and also means a smooth ride.



Endurance

120 days without re-fueling.

Dry docking interval 7.5 years.

Maintenance at sea lowers operating costs.



Redundancy

3 propellers, each with 2 motors - fully operational with 2 propellers.

2 engine rooms, each with 3 generators - fully operational with 1 engine room.



All Weather

Widening the weather window and extending the seasons in northern and southern hemispheres without compromising HSEQ.



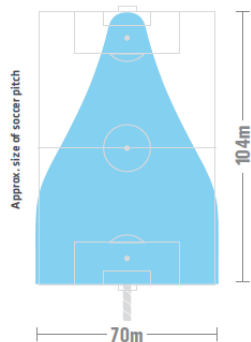
Fuel Capacity

Providing flexibility and endurance.



Power

Additional power enables more in-sea and onboard equipment.



220 tons

Wire Pull @ 4.5 kts

This measures towing force through the water and is a more realistic representation of towing capability than bollard pull (300 tons).

Space = Flexibility

Three times larger than modern conventional vessels, the Titans offer a highly efficient work environment with ample space for equipment, maintenance and accommodation.

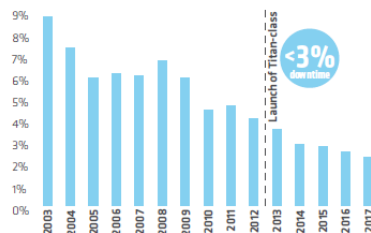


Towing & Handling

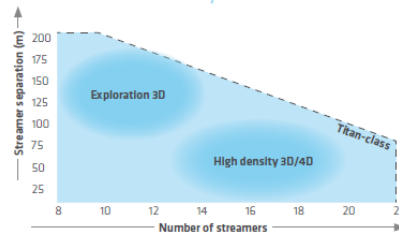
24 reel and streamer capacity and back deck automation provides flexibility, rapid deployment and safe retrieval.

Reliable Results

Downtime



Size + Power = Flexibility



Titan-class vessels cover all the bases from highly efficient reconnaissance exploration surveys to the detailed resolution required for 4D production seismic.

Records



Rapid Deployment

16 streamers (each 8.1 km) safely deployed in just 73 hours.

Largest Spread

129.6 km of active streamer was towed with a 16 x 8.1 km configuration in the Mediterranean.

Fast Acquisition

Highest production 175 sq. km in a day (average for this survey = 139 sq. km/day).

HSEQ

Layout and design improve health, safety, environment and quality.



Health

Social zones, gym, stability - rested crews perform better.



Environment

Larger spreads and faster turnaround mean fewer days on each job and leaves a smaller environmental footprint.



Safety

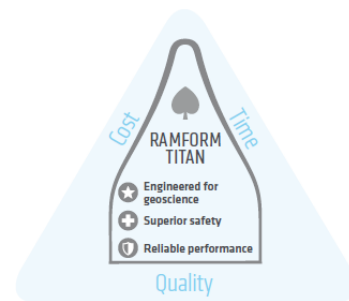
Stable platform minimizes risk of fatigue, trips and falls. Space to work, redundancy in power and propulsion, 2 stern-launched workboats, back-deck automation.



Quality

Superior platform to deploy the best dual-sensor technology - 100% GeoStreamer. Equipped with streamer and source steering.

No Compromise



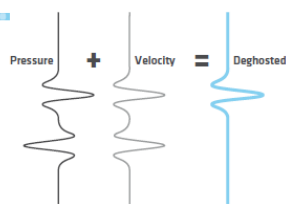
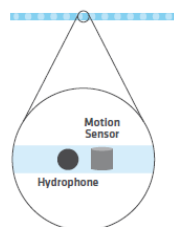
Future Proof



GeoStreamer®

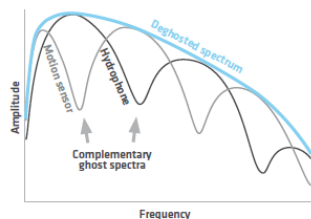
Dual Sensors

Complementary recordings facilitate deghosting by wavefield separation at all water depths.



Prestack Deghosting – More Options

Deghosting using dual-sensor measurements with their complementary ghost spectra eliminates frequency gaps, and provides access to separate wavefield components for advanced processes like PGS SWIM, FWI and Reflection Tomography.



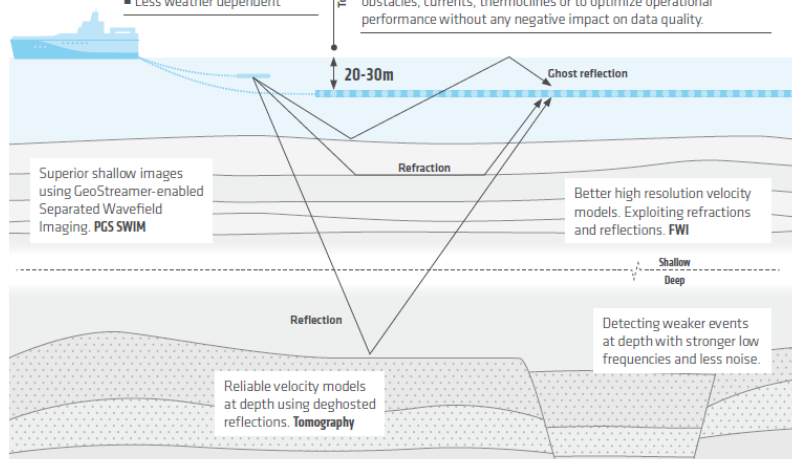
PGS vessels
100%
GeoStreamer

Deep Tow

- Better signal, less noise
- More low and high frequencies
- Less weather dependent

Flexible Tow Depth

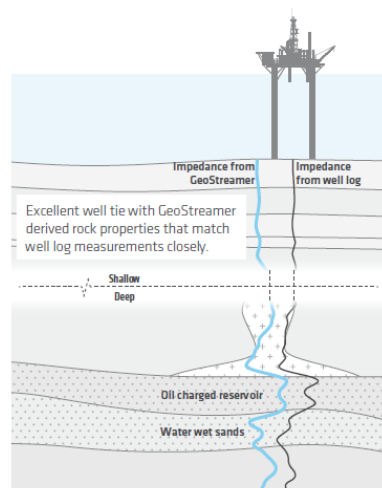
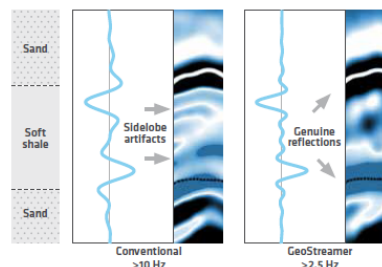
Dual-sensor recording enables us to re-datam the pressure wavefield to any depth. Towing depth can be adjusted in response to shallow obstacles, currents, thermoclines or to optimize operational performance without any negative impact on data quality.



1.0 Million
meters of active streamer

Broader Bandwidth – Sharper Boundaries

Rich low frequency content reduces sidelobe artifacts, providing clearer reservoir details.



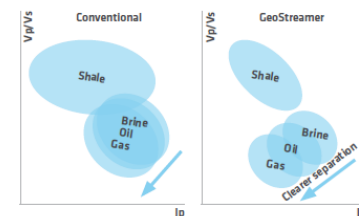
Experience that counts
600 000 KM²
acquired worldwide

April 2018

since
2007

De-risking with Precise Rock Properties

GeoStreamer prestack degghosting provides reliable attributes for better understanding of rock and fluid distribution. Improved attribute computations reduce uncertainty and enable more precise estimation of reserves.



Monitoring Reservoir Changes

Wavefield reconstruction enables high repeatability for both legacy surveys and future 4D monitoring independent of sea-state. This reveals more subtle production-related changes.

Proven in all Play Types

- SUB-SALT** Improved signal recovery and amplitude characterization.
- SUB-BASALT** Clearer sub-basalt imaging and intra-basalt layer definition.
- CLASTICS** Reliable reservoir properties without the need for well control.
- CARBONATES** Detailed mapping of internal structures and better porosity prediction.
- INJECTITES** Resolution of complicated geometries and identification of true geological impedance boundaries.



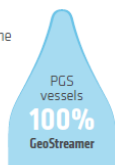
Acquisition Solutions

Ramform + GeoStreamer = Efficiency + Quality

The unique combination of GeoStreamer® technology and Ramform® vessels delivers a premium imaging product to locate and derisk your prospect.

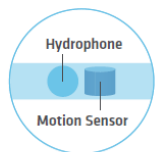
Better Image Quality

Dual-sensors combined with towing the streamers deep, 3D spread control, source steering, continuous recording and the ability to tow dense streamer spreads, all contribute to subsurface images of greater clarity, accuracy and reliability.



Reduced Survey Time

Faster turnaround time means less exposure to weather and faster access to data. We minimize the time it takes to complete a survey using 3D spread control, source steering, continuous recording, flexible tow depth and barnacle mitigation.



Dual Sensors

- Wavefield separation
- Better signal, less noise
- Tow depth independent
- True broadband



3D SpreadControl

- Infill management
- Efficient deployment & recovery
- Improved 4D repeatability



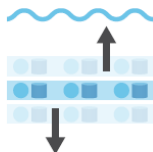
Dense Spreads

- Better receiver sampling
- Increased 3D/4D resolution
- Improved 4D repeatability



Source Steering

- Infill management
- Efficient deployment & recovery
- Improved 4D repeatability



Flexible Tow Depth

- Less weather impact
- Minimum drag, maximum efficiency
- Survey compatibility
- Increased 4D resolution

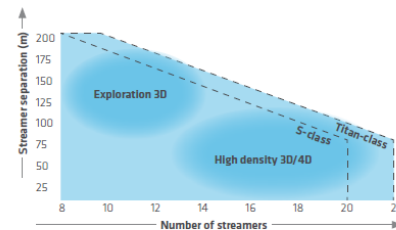


Continuous Recording

- Improved source sampling
- Increased vessel speed
- Flexible record length

Survey Versatility

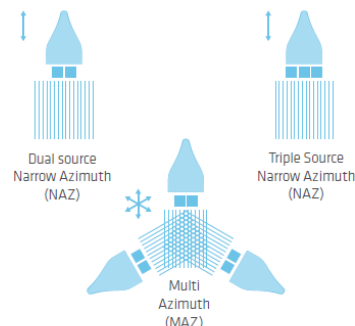
Our fleet is capable of covering all the bases from highly efficient exploration surveys to detailed 4D production seismic.



Define Challenge and Select Technology

Tailored acquisition geometries make it easier to solve imaging challenges. Subsurface complexity and geophysical objectives determine the acquisition and imaging solutions to produce the best quality images in the most effective way.

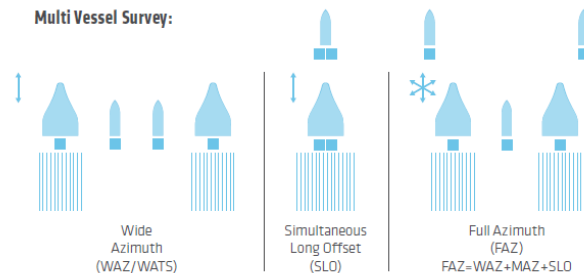
Single Vessel Survey:



Coverage Options

From single sail line to the ultimate full azimuth coverage. Target illumination increases with each additional pass and direction.

Multi Vessel Survey:



Leading the Industry



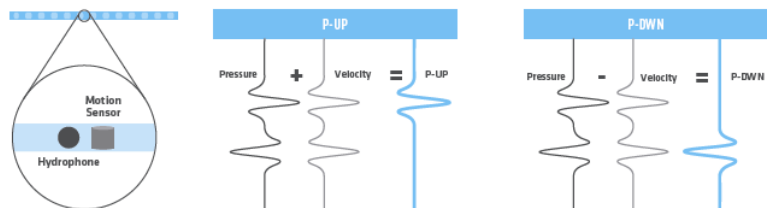
April 2018

PGSSWIM[®]

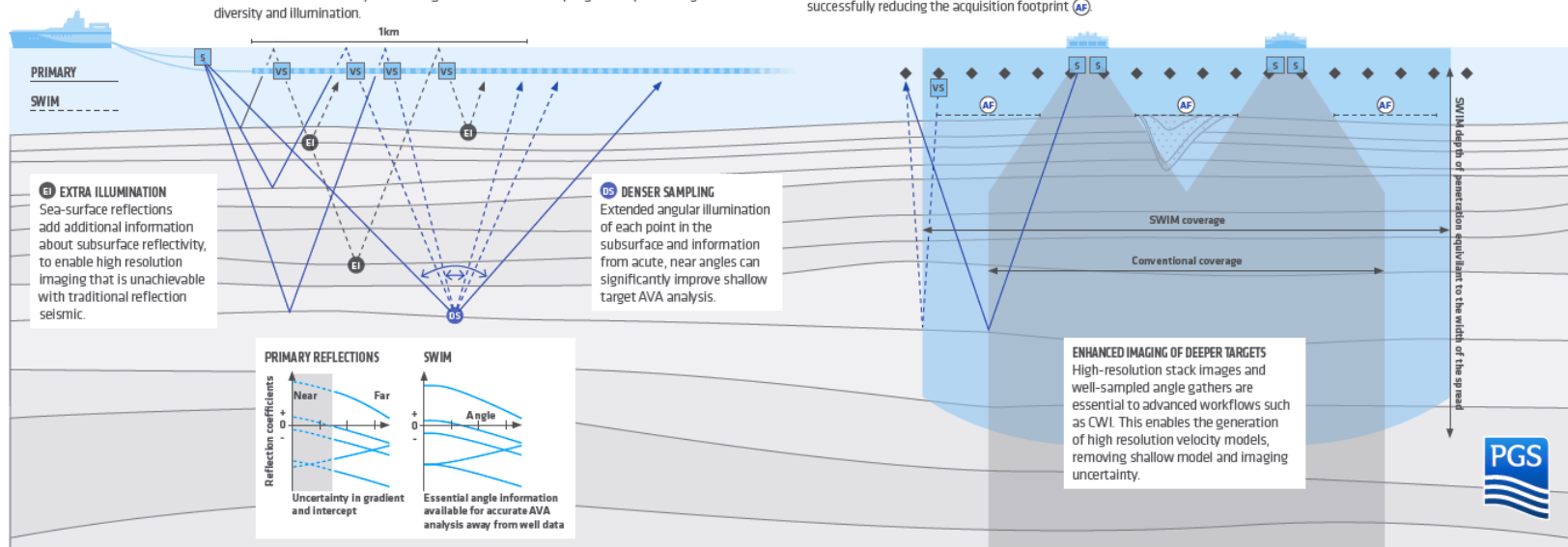
Extending Illumination and Angular Diversity

GeoStreamer data and SWIM imaging

Separated Wavefield Imaging (SWIM) is an innovative depth-imaging technology that uses both up- and down-going wavefields, recorded by GeoStreamer[®] dual hydrophone and motion sensors.



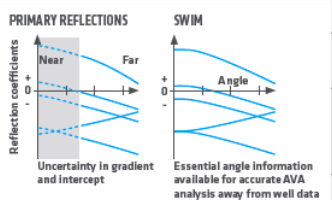
VS VIRTUAL SOURCES Utilizing sea-surface reflections and making each receiver a virtual source results in the survey area having increased source sampling and improved angular diversity and illumination.



EXTRA ILLUMINATION
Sea-surface reflections add additional information about subsurface reflectivity, to enable high resolution imaging that is unachievable with traditional reflection seismic.

DENSER SAMPLING
Extended angular illumination of each point in the subsurface and information from acute, near angles can significantly improve shallow target AVA analysis.

ENHANCED IMAGING OF DEEPER TARGETS
High-resolution stack images and well-sampled angle gathers are essential to advanced workflows such as CWI. This enables the generation of high resolution velocity models, removing shallow model and imaging uncertainty.



SWIM + Survey Geometries

NARROW AZIMUTH TO WIDE TOW SWIM enables the design and use of cost effective acquisition geometries such as super-wide tow. For narrow azimuth surveys in shallow water SWIM yields better sampled data in the angle domain.

WIDE AZIMUTH The extra subsurface illumination of sea-surface reflections combined with Wide Azimuth (WAZ) acquisition facilitates the imaging of salt flanks and other steeply dipping structures.



Reduce Acquisition Footprint

Turning the receiver spread into virtual sources (VS) and receiver arrays reduces source sampling in the crossline direction from the distance between sail lines to that between streamers. Using SWIM in shallow water fills in gaps in near-surface coverage successfully reducing the acquisition footprint (AF).

Further Uses

OCEAN BOTTOM DATA
SWIM has been successfully applied to seabed data such as ocean bottom node and cable recordings. SWIM can increase the shallow image area of the seabed and the underlying sediments by up to 700%.

IMPROVED MULTIPLE REMOVAL
SWIM enables the generation of detailed shallow overburden images that are a requirement for some data-driven 3D SRME multiple removal methods.

REDUCING DRILLING RISK Superior illumination of the overburden using SWIM provides high-resolution images suitable for shallow hazard work, helping to identify drilling risks.

