

RAMFORM Titan-Class

Engineered for Geoscience

For all enquires please contact:

Email: info@PGS.com

A Clearer Image | www.pgs.com/Ramform



A Clearer Image | www.pgs.com/Ramform



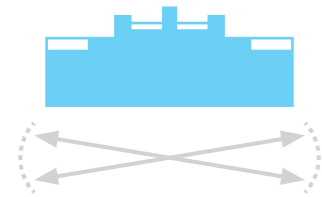
RAMFORM Titan-Class

25
years

Lifespan

Setting the benchmark for this generation of seismic vessels and the next.

Ramform Facts



Stability

The Titan design ensures better performance and room for growth. The ultra-broad delta shaped hull provides fantastic seakeeping capabilities and also means a smooth ride.



Endurance

120 days without re-fueling.

Dry docking interval **7.5** years.

Maintenance at sea lowers operating costs.



Redundancy

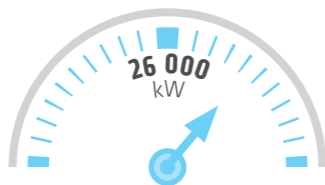
3 propellers, each with 2 motors – fully operational with 2 propellers.

2 engine rooms, each with 3 generators – fully operational with 1 engine room.



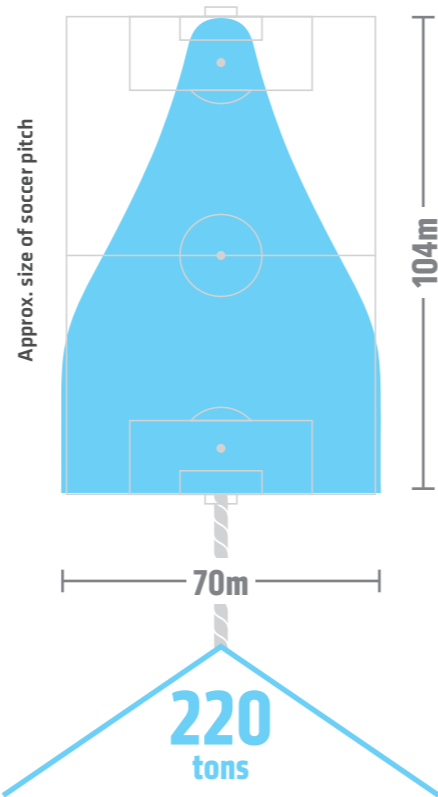
All Weather

Widening the weather window and extending the seasons in northern and southern hemispheres without compromising HSEQ.



Power

Additional power enables more in-sea and onboard equipment.



Wire Pull @ 4.5 kts

This measures towing force through the water and is a more realistic representation of towing capability than bollard pull (300 tons).

Space = Flexibility

Three times larger than modern conventional vessels, the Titans offer a highly efficient work environment with ample space for equipment, maintenance and accommodation.

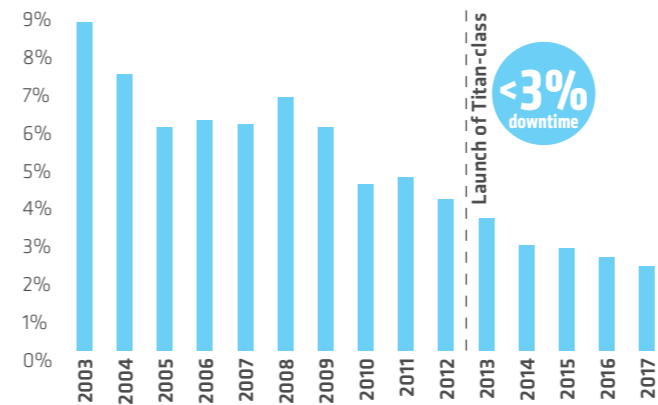


Towing & Handling

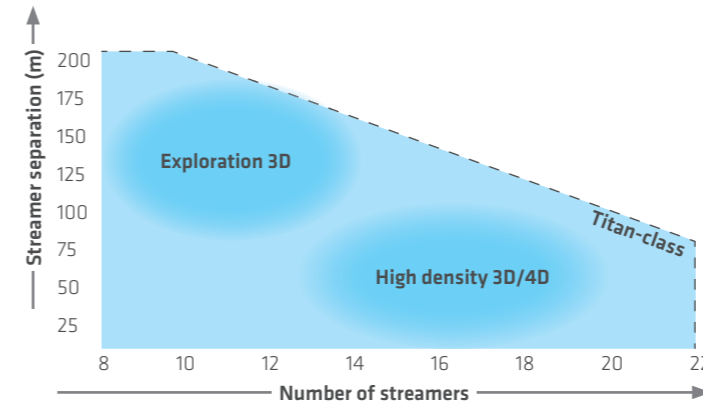
24 reel and streamer capacity and back deck automation provides flexibility, rapid deployment and safe retrieval.

Reliable Results

Downtime



Size + Power = Flexibility



Titan-class vessels cover all the bases from highly efficient reconnaissance exploration surveys to the detailed resolution required for 4D production seismic.

Records



Rapid Deployment

16 streamers (each 8.1 km) safely deployed in just 73 hours.

Largest Spread

129.6 km of active streamer was towed with a 16 x 8.1 km configuration in the Mediterranean.

Fast Acquisition

Highest production 175 sq.km in a day (average for this survey = 139 sq. km/day).

HSEQ

Layout and design improve health, safety, environment and quality.



Health

Social zones, gym, stability – rested crews perform better.



Environment

Larger spreads and faster turnaround mean fewer days on each job and leaves a smaller environmental footprint.



Safety

Stable platform minimizes risk of fatigue, trips and falls. Space to work, redundancy in power and propulsion, 2 stern-launched workboats, back-deck automation.



Quality

Superior platform to deploy the best dual-sensor technology - 100% GeoStreamer. Equipped with streamer and source steering.

Future Proof

No Compromise

