



## EAGE 2020

# Live on the PGS Virtual Booth



*Live Presentation with Q&A (30 mins)*  
**Ask the Experts**

Use the booth chat on the right-hand side to direct your questions to the experts. Accept our invite to turn on your camera and microphone to ask your questions live.

*Wednesday 9 December @ 17:15 CET*

**GeoStreamer X and Beyond: Flexible Towing Solutions**

Hosted by Andrew Long with guests Martin Widmaier and Julien Oukili

*Thursday 10 December @ 16:15 CET*

**eSeismic – Source Carpets with Continuous Seismic Wavefields**

Hosted by Andrew Long with guests Stian Hegna and Anthony Day

*Friday 11 December @ 16:15 CET*

**Multisensor 4D Imaging and Characterization**

Hosted by Andrew Long with guests Didier Lecerf and Cyrille Reiser



*Live Daily Update (10 mins)*  
**Andrew Long's Commentary**

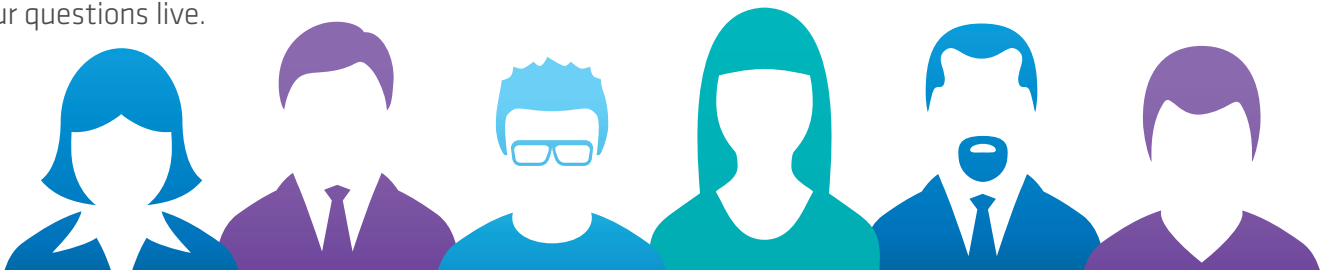
Use the booth chat on the right-hand side to direct your questions to Andrew. Accept our invite to turn on your camera and microphone to ask your questions live.

*Tuesday 8 December @ 15:15 CET*

**What to Expect from EAGE 2020**

*Wednesday 9, Thursday 10, Friday 11th December @ 13:15 CET*

**Daily Updates**



For all enquires: [contact@pgs.com](mailto:contact@pgs.com)

A Clearer Image | [www.pgs.com/eage2020](http://www.pgs.com/eage2020)





**EAGE 2020**

# Technical Program

**8 December**



**Marta Wierzchowski**

Staff Geophysicist

**Time-Lapse Data –  
Acquisition & Processing**

17:00 - 18:00 CET | TP Online 2

**Quantifying 4D repeatability  
improvements with evolutionary  
acquisition on the Gullfaks field,  
North Sea**

Authors: Marta Wierzchowski, Darryl  
Anderson, Julien Oukili (PGS); Yulia  
Biryaltseva, Daniel Fischer, Emin  
Sadikhov, Ben King (Equinor)



**Yang Yang**

Research Geophysicist

**Full Waveform Inversion 1**

17:00 - 18:00 CET | TP Online 1

**Full Waveform Inversion using wave-  
equation reflectivity modeling**

Authors: Yang Yang, Jaime Ramos-  
Martinez, Dan Whitmore (PGS);  
Alejandro A. Valenciano (formerly  
of PGS); Nizar Chemingui (PGS)

**9 December**



**Elena Klochikhina**

Section Manager

**Imaging Theory 1**

17:00 - 18:00 CET | TP Online 1

**High-resolution angle gathers from  
Iterative Least-Squares Migration**

Authors: Lian Duan (formerly of PGS);  
Dan Whitmore, Nizar Chemingui, Elena  
Klochikhina (PGS)

For all enquires: [contact@pgs.com](mailto:contact@pgs.com)

A Clearer Image | [www.pgs.com/eage2020](http://www.pgs.com/eage2020)





**EAGE 2020**

# Technical Program

10 December



**Marcus Bell**

Imaging Specialist

**Velocity Model Building 1**

17:00 - 18:00 CET | TP Online 1

**Automating velocity model building using Monte Carlo simulations - A West African case study**

Authors: Marcus Bell, Tony Martin, and Thomas Massip (PGS)



**Stian Hegna**

Geophysical Advisor

**Seismic Acquisition – Sources and Receivers**

14:00 - 15:00 CET | TP Online 2

**Continuous Wavefields Method – Results from a shallow water field test**

Authors: Stian Hegna, Tilman Klüber, Jostein Lima (PGS)



**Maiza Bekara**

Section Manager

**Transforms and ML & Interpolation**

17:00 - 18:00 CET | TP Online 2

**Mixed phase seismic wavelet estimation using the bispectrum**

Authors: Maiza Bekara (PGS)



**Carine Roalkvam**

Regional Geophysical Advisor

**Seismic Acquisition – Sources and Receivers**

14:00 - 15:00 CET | TP Online 2

**Redefining high-resolution multi-azimuth towed streamer acquisition on the Norwegian Continental Shelf**

Authors: David O'Dowd (formerly of PGS); Martin Widmaier, Carine Roalkvam, Marielle Ciotoli, Luca Limonta (PGS)



**Elena Klochikhina**

Section Manager

**ML in Seismic Processing 1**

14:00 - 15:00 CET | TP Online 5

**Deep Learning for migration artefacts attenuation**

Authors: Elena Klochikhina, Sergey Frolov, Nizar Chemingui (PGS)



**Didier Lecerf**

Principal Geophysicist

**Multiple Imaging & Diffraction Modelling**

15:00 - 16:00 CET | TP Online 1

**Can we decrease significantly the number of OBN by using Full Wavefield Migration?**

Authors: Didier Lecerf (PGS); Amir Asnaashari, Abderrahim Lafram (Total)

For all enquires: [contact@pgs.com](mailto:contact@pgs.com)

A Clearer Image | [www.pgs.com/eage2020](http://www.pgs.com/eage2020)





**EAGE 2020**

# Technical Program

11 December



**Norman Dan Whitmore**

Consultant

**Wave Field Modelling 1**

15:00 - 16:00 CET | TP Online 1

**Full wavefield modelling with vector reflectivity**

Authors: Dan Whitmore, Jaime Ramos-Martinez, Yang Yang, Alejandro A. Valenciano (PGS)



**Bagher Farmani**

Senior Research Geophysicist II

**Noise Attenuation Methods**

15:00 - 16:00 CET | TP Online 2

**Application of convolutional neural network in automated hydrophone swell noise attenuation**

Authors: Bagher Farmani, Morten Pedersen (PGS)

# Interactive Hot Topic Session

11 December



**Andrew Long**

Chief Geoscientist

**FWI: Future Perspective without the Hype**

15:00 - 16:00 CET

For all enquires: [contact@pgs.com](mailto:contact@pgs.com)

A Clearer Image | [www.pgs.com/eage2020](http://www.pgs.com/eage2020)

